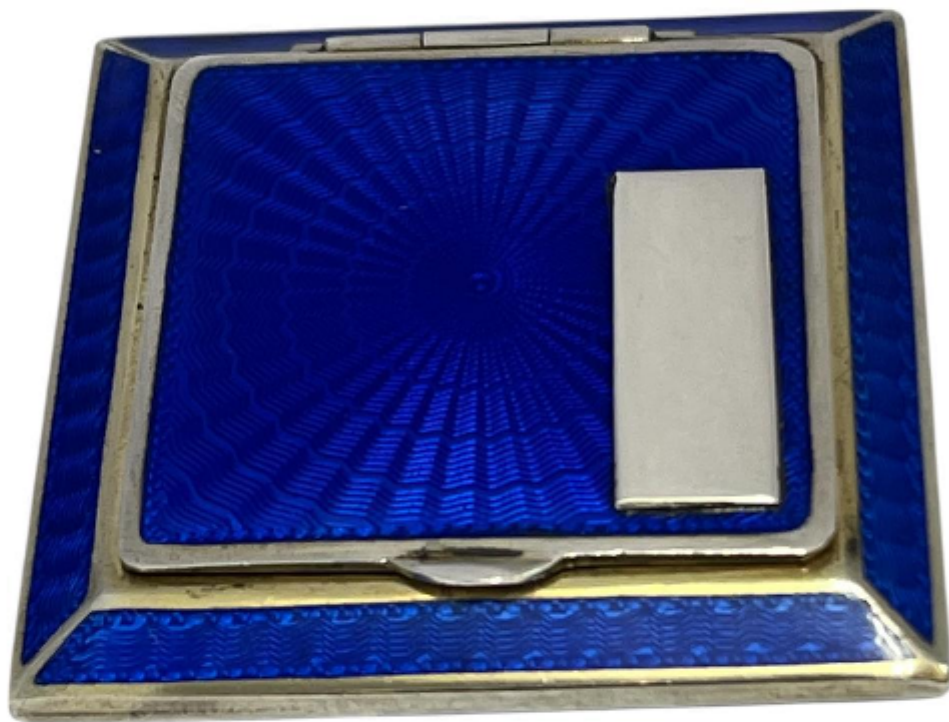


Antique Austrian Sterling Silver & Guilloché Enamel Compact - Circa 1930

£750



REF: PG-INT

Height: 0.09 cm (0")

Width: 4.5 cm (1.8")

Depth: 4.5 cm (1.8")

Weight: 50 g

Description

Antique Austrian Sterling Silver & Royal Blue Guilloché Enamel Compact.

This exceptional square compact is a masterclass in Art Deco design and Austrian craftsmanship. Designed for the sophisticated vanity, it combines functional mechanical precision with stunning aesthetic appeal.

The exterior features a brilliant royal blue guilloché enamel finish.

The central panel is decorated with a radiating sunburst pattern, while the outer border displays a rhythmic, wavy engine-turned texture.

A sleek, polished silver cartouche is set into the lid, intentionally left blank for personalised engraving

The inside is finished in a rich gold-tone vermeil. It features a clear glass mirror in the lid and a beautifully engine-turned, rotating sifter mechanism used for loose powder.P

The interior plate is clearly stamped with "MADE IN AUSTRIA" and "STERLING," confirming its origin and silver purity.

A regal example of early 20th-century personal luxury, this oval trinket box showcases the height of Edwardian elegance and fine metalwork.

The lid is adorned with translucent royal blue guilloché enamel over a shimmering sunburst pattern. It is accented with a central gilded floral rosette and a contrasting white enamel border

The sterling silver body features a vertical geometric engine-turned pattern accented by delicate "beaded" rows. The edge of the lid is finished with a hand-engraved foliate scroll border.

The interior is fully gold-washed (vermeil), a traditional technique used to prevent corrosion and add a sense of opulence.

The box is unmarked.