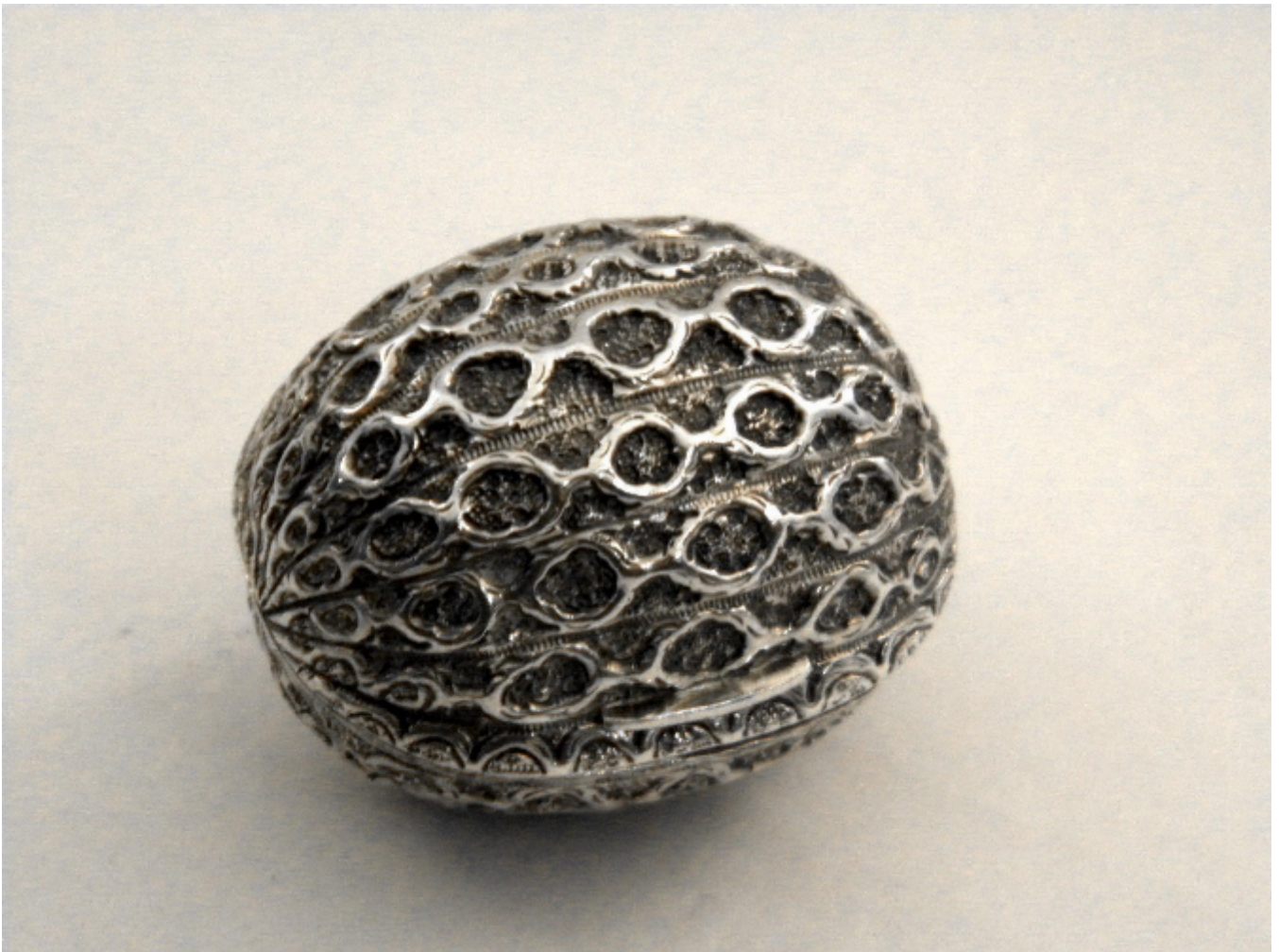


ANTIQUE VICTORIAN WALNUT SHAPED NUTMEG GRATER 1860

Sold



REF: VSNG1

Height: 3.7 cm (1.5")

Width: 4 cm (1.6")

Depth: 3.4 cm (1.3")

Weight: 20.3 g

## Description

A Victorian Silver Nutmeg Grater in the shape of a Walnut Shell. The Nutmag grated has a fitted hinged lid and a pierced hinged grater.

This Grater is in good condition and is hallmarked.

Made in Birmingham.

Date - 1860.

Maker - Hilliard and Thompson.

Approx. Weight - 20.3g

Approx. Length - 40mm / 1 2/3 inches

Approx. Width - 34mm / 1 1/3 inches

Approx. Height - 37mm / 1 1/2 inches

T/CJTT