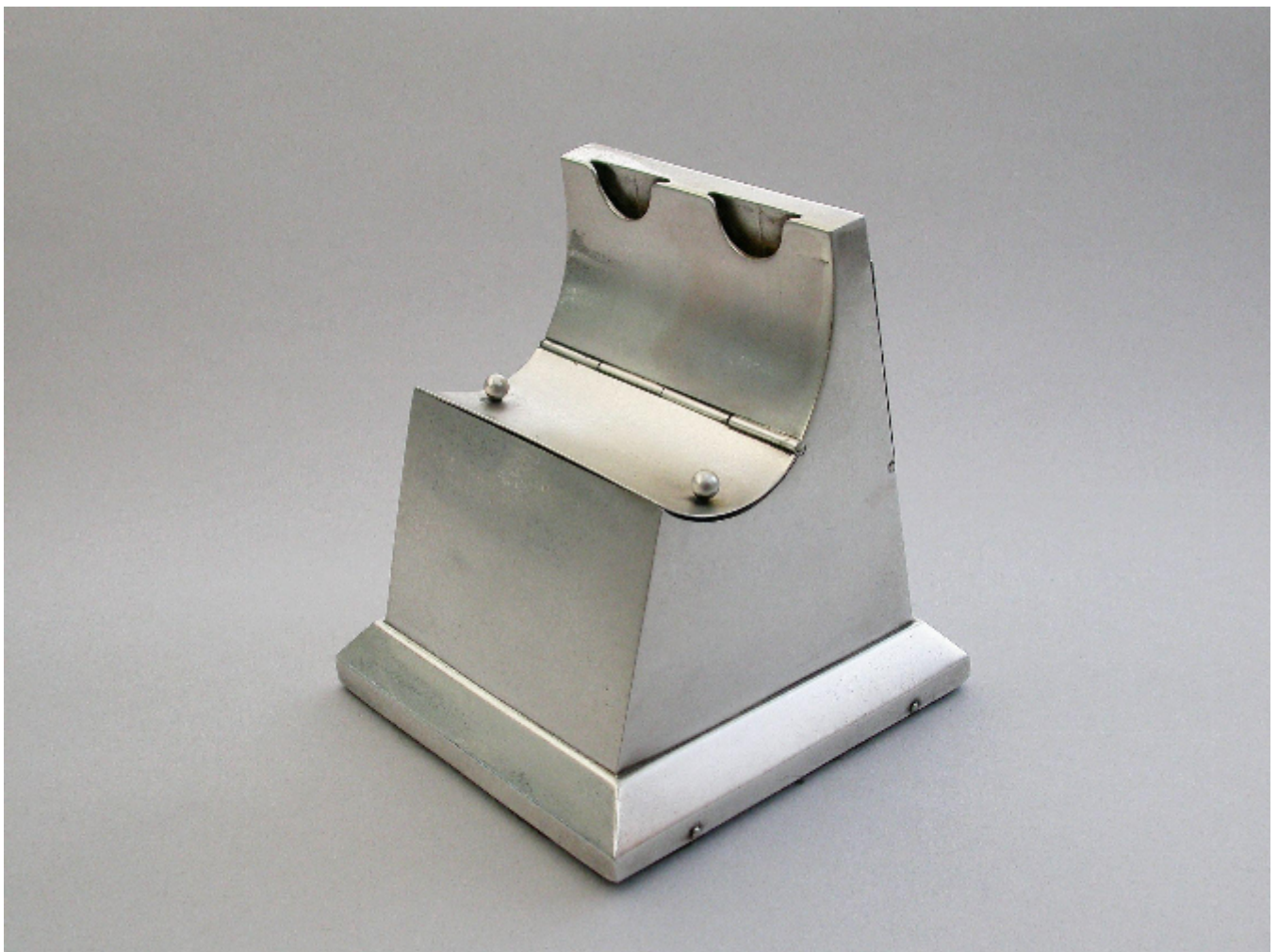


Edwardian Silver Stamp Roll Dispenser & Double Inkwell, London by
S.CLIFFORD & CO

Sold



REF: N9195 KB13

Height: 9.2 cm (3.6")

Width: 8.6 cm (3.4")

Depth: 8.6 cm (3.4")

Weight: 259 g

Description

A rare Edwardian silver Double Inkwell combined with a twin compartment stamp roll dispenser, of upright wedge shape on pedestal base, the top with two slots for dispensing the stamps which are refilled via a hinged door at the back, the front with curved sprung hinged lid/pen rest, opening to two glass wells.

By 'DR', over-stamping S.Clifford & Co, London 1906.