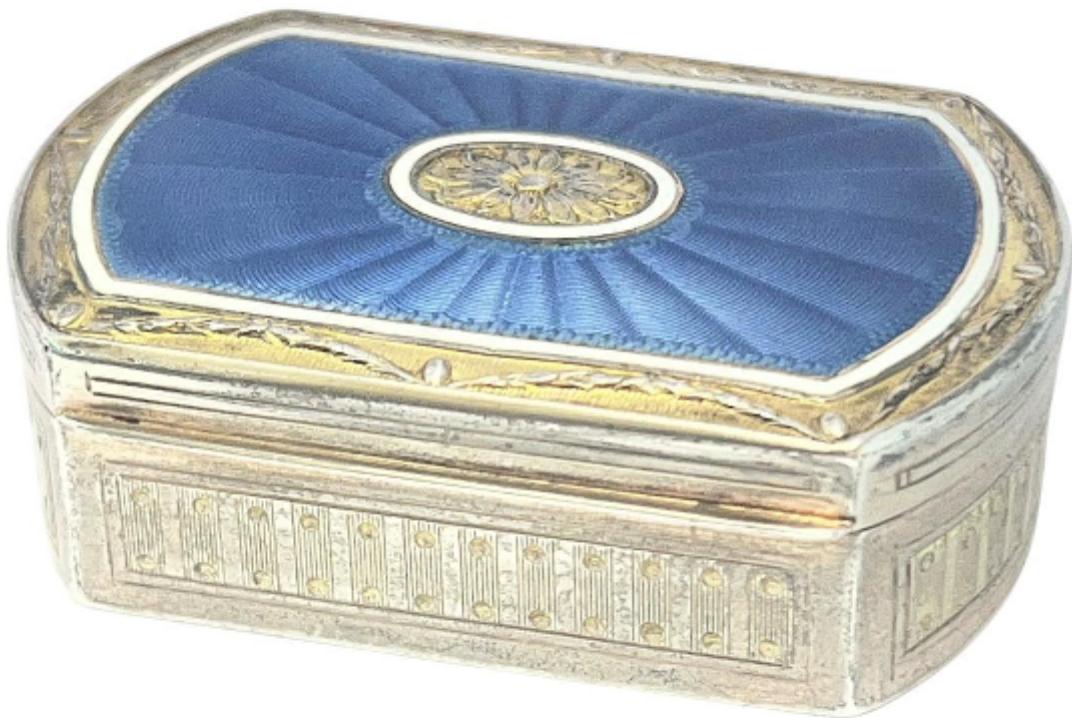


Antique Guilloché Enamel and Silver-Gilt Box,

£750



REF: PG-INT

Height: 1.8 cm (0.7")

Width: 5.8 cm (2.3")

Depth: 3.8 cm (1.5")

Weight: 41 g

Description

This is a sophisticated continental Antique Guilloché Enamel and Silver-Gilt Box, likely dating from the late 19th to early 20th century, possibly Russian or Austro-Hungarian, given the style of the enamel and the specific hallmarks.

The lid centerpiece features a stunning royal blue guilloché enamel panel. The enamel is applied over an engine-turned "sunburst" or radiating pattern that catches the light through the translucent glass. It is framed by a delicate white enamel border and centred with a gilded floral or rosette medallion.

The body of the box is crafted from silver with a vermeil (gold-plated) interior. The exterior sides feature an intricate engine-turned geometric pattern of vertical lines and small circular "bead" accents, bordered by hand-engraved foliate scrolls around the lid's rim.

The interior is fully gilded (gold-washed), a technique traditionally used to protect the silver from tarnishing and to add a sense of luxury.

The box is marked with "925", indicating it is made of Sterling Silver.

There are two distinct stamps. These types of oval and rectangular stamps are frequently found on high-end snuff or pill boxes from the Belle Époque era.

There is a gentle patina and some minor surface wear to the silver-gilt edges, consistent with an authentic antique of its age.