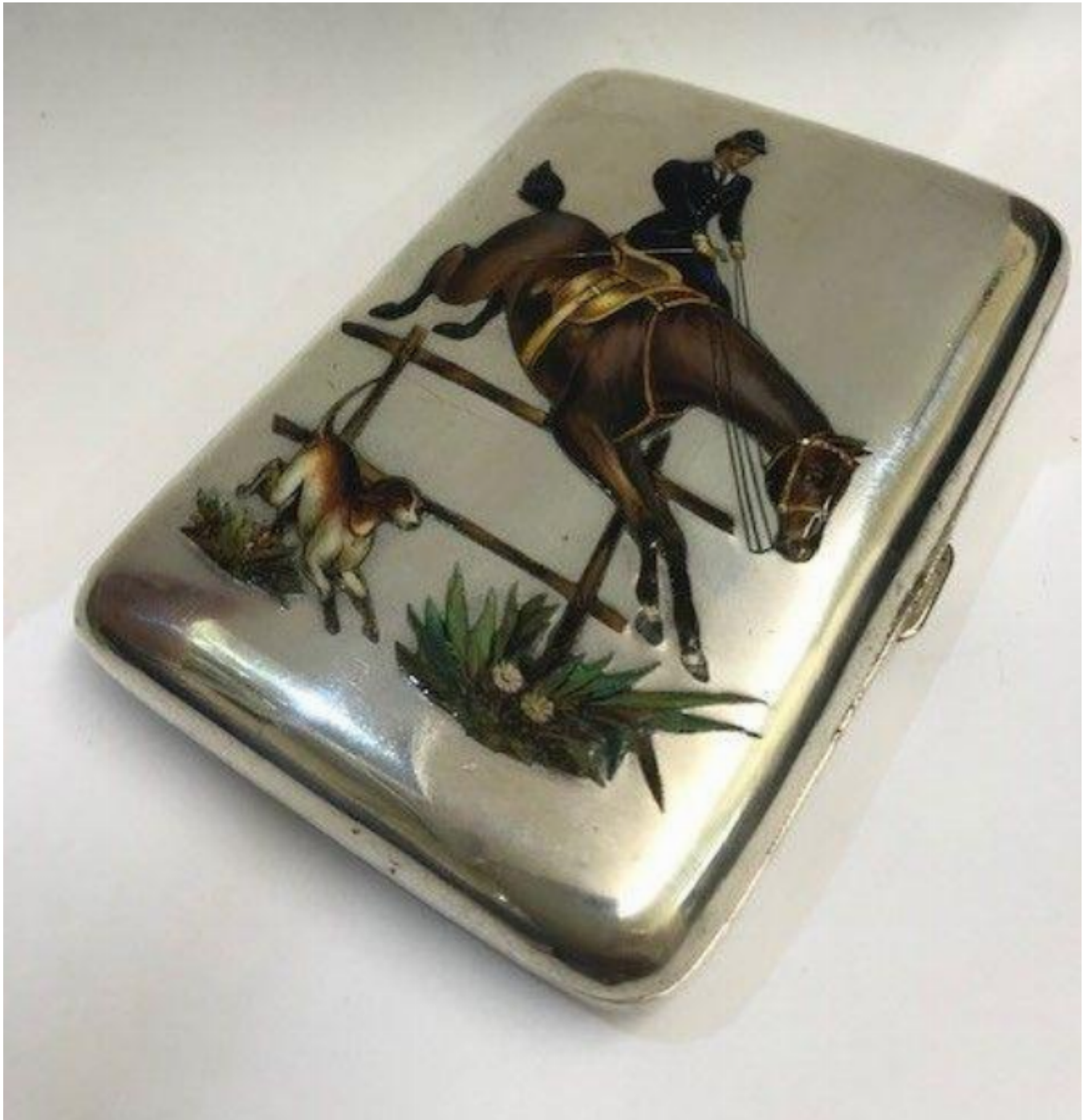


CONTINENTAL SILVER & ENAMEL CASE CIRCA: 1920

Sold



REF: N7571

Height: 8.2 cm (3.2")

Width: 6.5 cm (2.6")

Weight: 86 g

Description

Continental Silver & Enamel Case with a Lady Side Saddle Jumping over a Fence with Her Dog following. Gilded Inside.

Made in Germany

Date: circa 1920

Maker: H D F Goldschmide

Weight: 86g / 2.77oz

Length: 8.2cm / 3.5in

Width: 6.5 cm / 2.5in

The Case is in good Condition.

T/ YNT